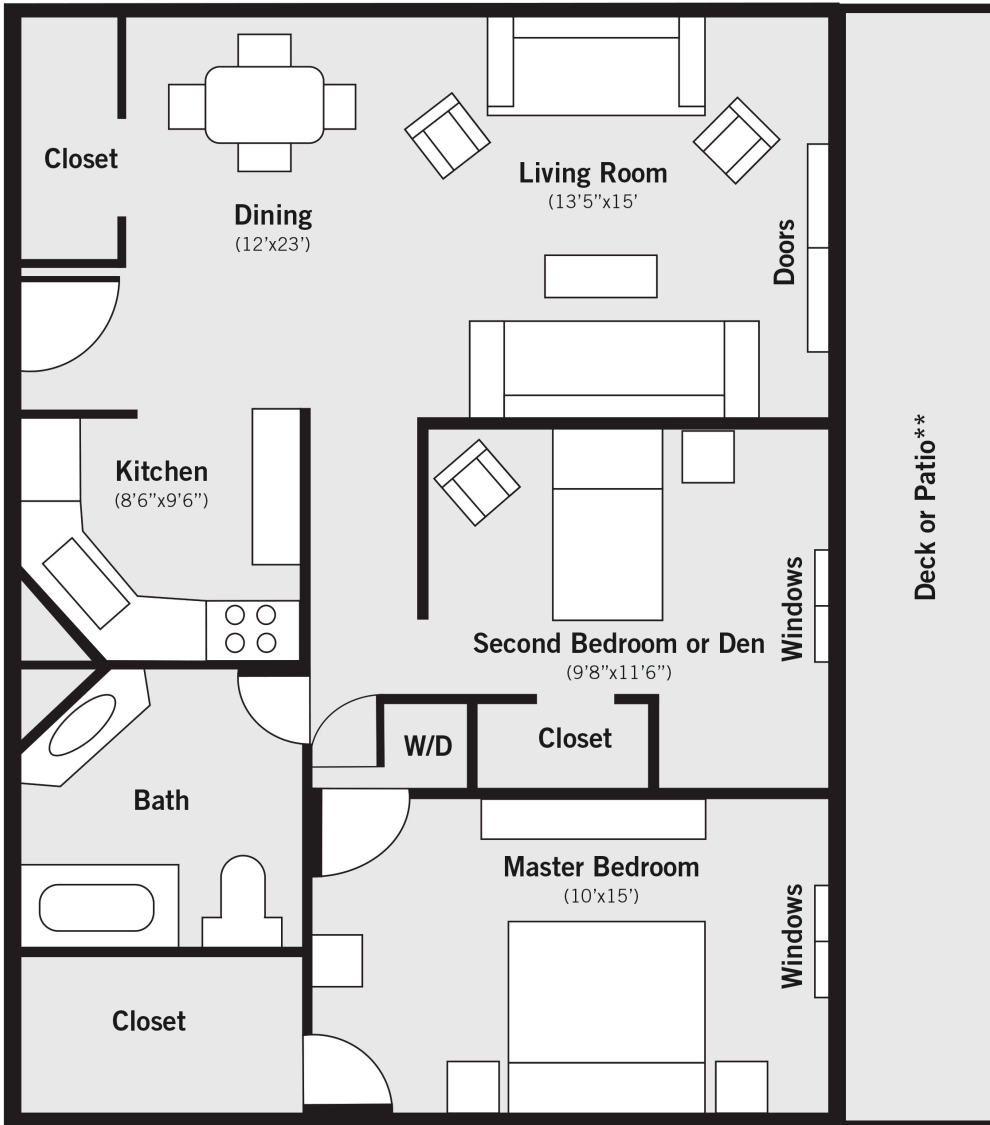




## Schooner Cove SALT BAY SUITE Floor Plan - 850 Square Feet

Featuring inland or river views



- Two bedrooms:
  - Master - 10' x 15',
  - Second Bedroom - 9'8" x 11'6"
- One full bath (Master Bedroom)
- Living/Dining Room (12' x 23')
- Kitchen (8'6" x 9'6")

Every Schooner Cove floor plan is thoughtfully designed for safety and comfort. Our apartments feel spacious, elegant and extend a warm welcome to you, your family and friends. Every apartment includes:

### APPLIANCES

Stackable washer/dryer, refrigerator/freezer, kitchen range, and dishwasher.

### STORAGE

Apartment plans include generous closet space, and additional storage is available at no extra charge on the first floor of Schooner Cove.

Every apartment is refurbished prior to occupancy according to your wishes. Choose your paint colors, floor coverings and many other finishes. *A refurbishment allowance is included in the purchase price.*

*\*\*Inland facing apartments have small porches instead of decks. Apartment 316 has additional living space instead of a deck.*



Contact Bruce Hardina today to arrange a tour or for more information about Schooner Cove.

*Bruce Hardina,  
Marketing Manager,  
Schooner Cove*